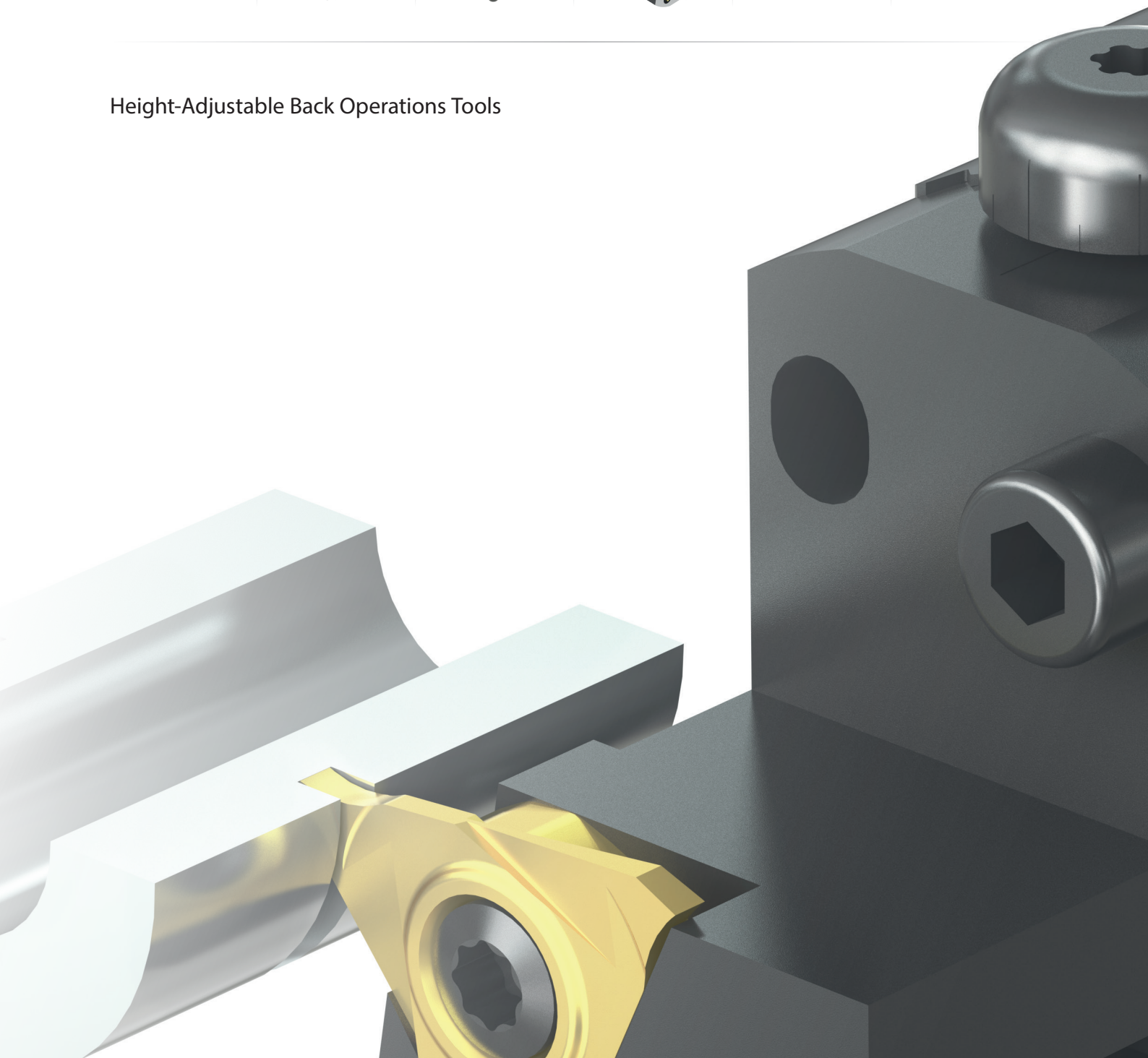
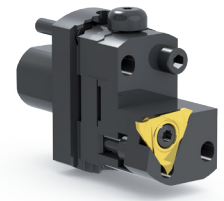


Height-Adjustable Back Operations Tools





Index

	Page
Description	3
Basic toolholder	6
CITIZEN	6
HANWHA	7
MAIER	8
MANURHIN	9
STAR	10
TORNOS	11
TRAUB	12
VDI	13
Spacer	14
Cassette	16
SIMTEK	
simturn A04, A05, A06 "ME"	16
simturn E3	17
simturn E12	18
simturn FX	20
ISO	
CC...09T3...	21
DC...0702...	22
DC...11T3...	23
VC...1103...	26
3ER / R16, 3EL / L16	27
VC...1303...	28
General Adaptors	
○ Round shank	29
□ Square shank 10,0 x 10,0 mm	30
○ Collet chucks	31
Cassette mounting screw	32
Important note about the screw length	33



Fast. Easy. Useful.

The precium-Webcode

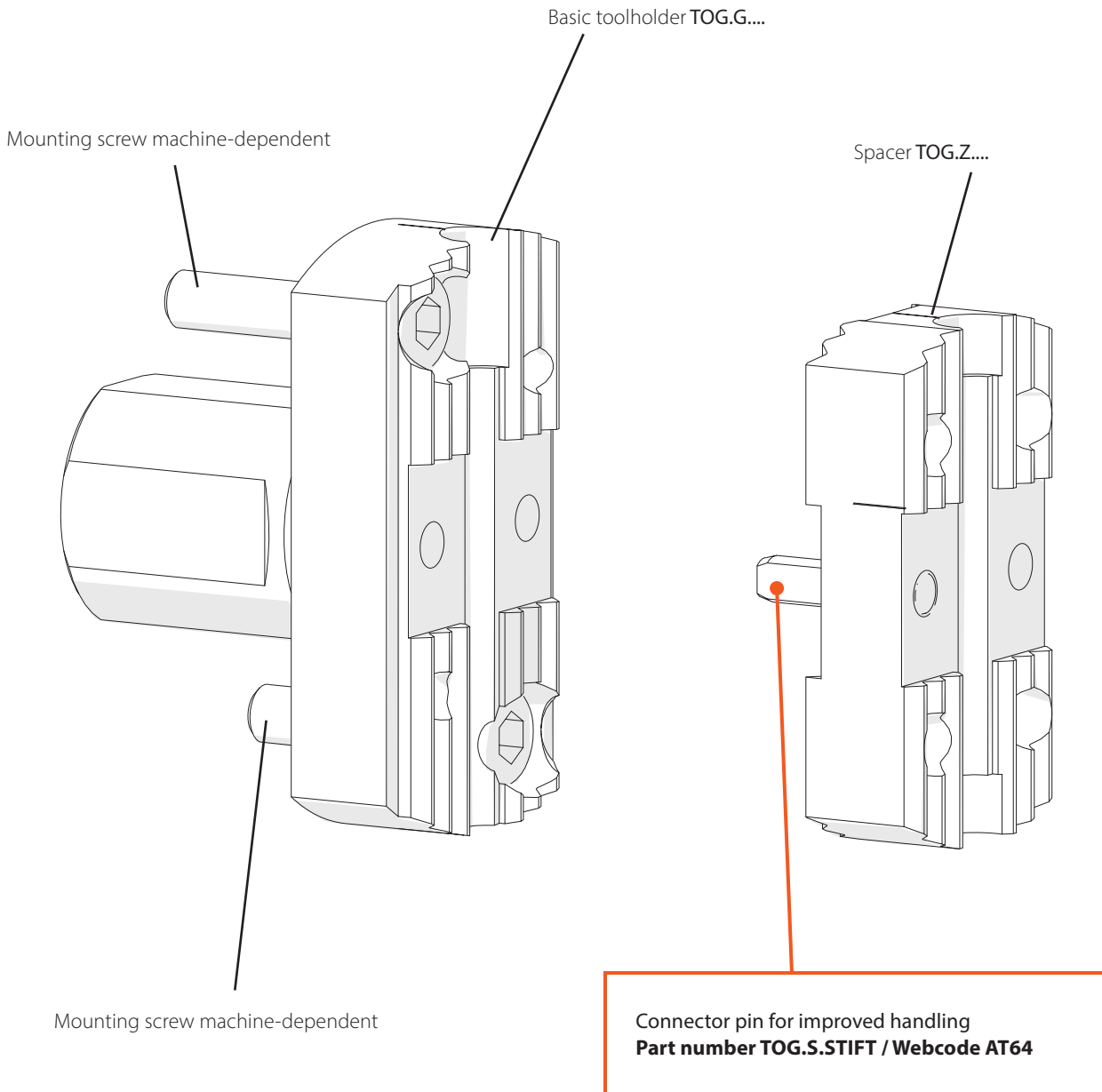
Part n°	Webcode	ØD inch / mm
0750.040.06	AUEW	0,75 / 19,05
0750.050.06	AT15	0,75 / 19,05
0750.120.06	AUEX	0,75 / 19,05
0020.030.06	AUEY	0,787 / 20,00
0020.040.06	AUE2	0,787 / 20,00
1000.030.06	AT16	1.000 / 25,40

Every precium item also has a 4-digit Webcode that equally describes the item parallel to its part number.

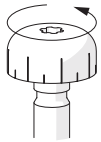
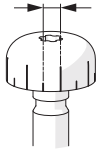
You can use the Webcode in order to purchase the item or to get up-to-date availabilities at SIMTEK’s headquarters in Germany by using the Webcode on **www.simtek.com**

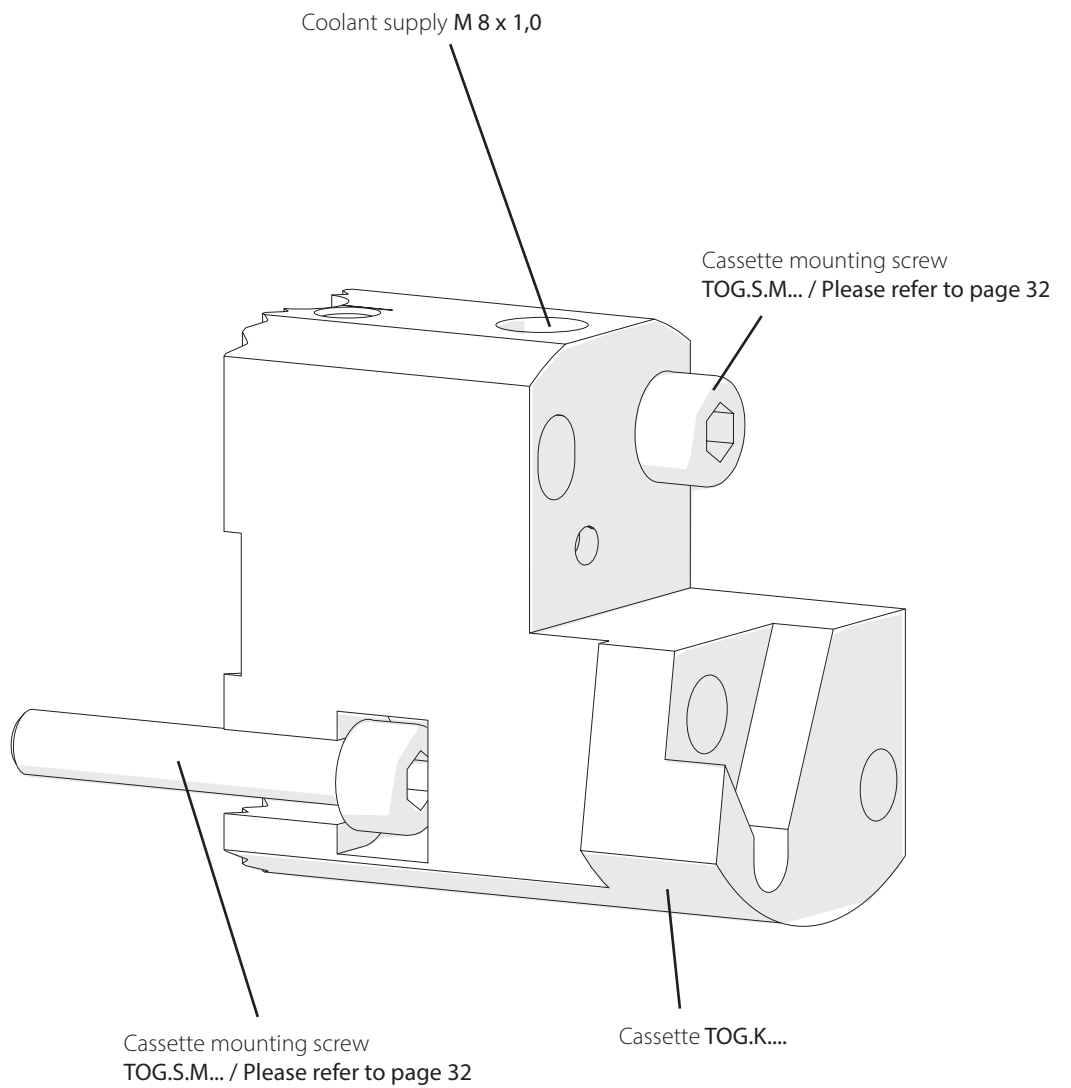
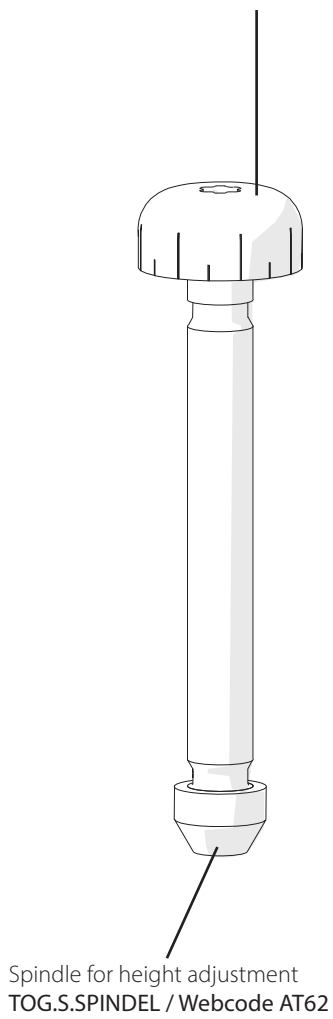
Customized tool

In case the standard tools of this catalog do not match your specific application, customized tooling solutions can be offered according to your individual needs. Please send your inquiries for customized tools to **usa@simtek.com**.





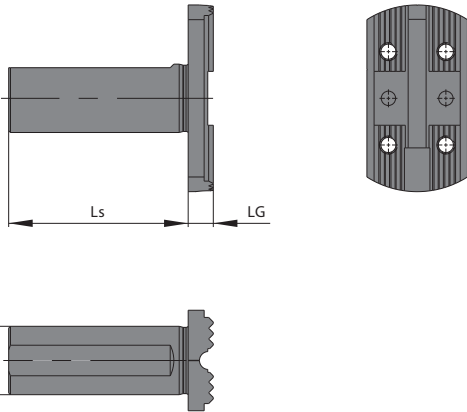
		
Height adjustment	~0.031" ~0,8 mm	~0.002" ~0,05 mm





CITIZEN

Basic toolholder for
CITIZEN-Machines



○ Items included

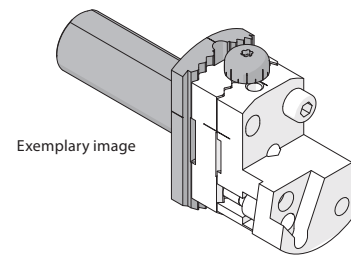


Image: TOG.G.0750.050.06

Part number	Webcode	ØD inch / mm	Ls inch / mm	LG inch / mm
TOG.G.0750.040.06	AUEW	0,75 / 19,05	1,575 / 40,0	0,276 / 7,0
TOG.G.0750.050.06	AT15	0,75 / 19,05	1,969 / 50,0	0,276 / 7,0
TOG.G.0750.120.06	AUEX	0,75 / 19,05	4,724 / 120,0	0,276 / 7,0
TOG.G.0020.030.06	AUEY	0,787 / 20,0	1,181 / 30,0	0,276 / 7,0
TOG.G.0020.040.06	AUE2	0,787 / 20,0	1,575 / 40,0	0,276 / 7,0
TOG.G.1000.030.06	AT16	1,000 / 25,4	1,181 / 30,0	0,276 / 7,0
TOG.G.1000.060.06	AUEZ	1,000 / 25,4	2,362 / 60,0	0,276 / 7,0
TOG.G.1000.100.06	AT17	1,000 / 25,4	3,937 / 100,0	0,276 / 7,0

Items included

- Spindle
TOG.S.SPINDEL

Mounting screw machine-dependent



HANWHA Basic toolholder for HANWHA-Machines

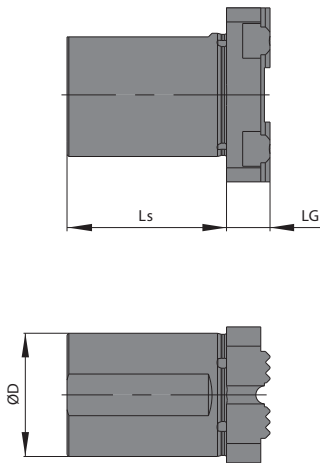
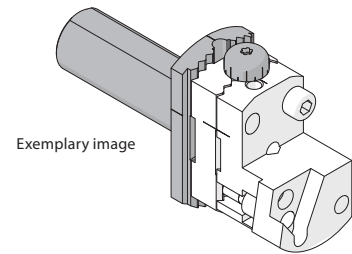


Image: TOG.G.0034.044.12

○ Items included

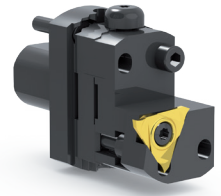


Part number	Webcode	ØD inch / mm	Ls inch / mm	LG inch / mm
TOG.G.0025.040.12	AT1X	0.984 / 25,0	1.575 / 40,0	0.472 / 12,0
TOG.G.0025.060.12	AUEP	0.984 / 25,0	2.362 / 60,0	0.472 / 12,0
TOG.G.0032.025.12	AT10	1.260 / 32,0	0.984 / 25,0	0.472 / 12,0
TOG.G.0033.040.12	AT11	1.299 / 33,0	1.575 / 40,0	0.472 / 12,0
TOG.G.0034.044.12	AT14	1.339 / 34,0	1.732 / 44,0	0.472 / 12,0

Items included

- Spindle
TOG.S.SPINDEL

Mounting screw machine-dependent



MAIER

Basic toolholder for MAIER-Machines

Basic toolholder

Spacer

Cassette

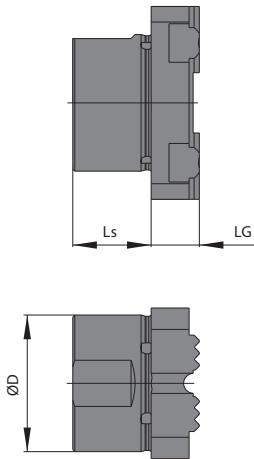
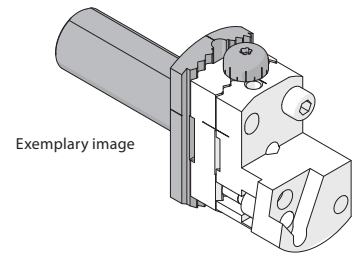


Image: TOG.G.0034.020.12

○ Items included



Part number	Webcode	ØD inch / mm	Ls inch / mm	LG inch / mm
TOG.G.0028.040.12	AUE0	1.102 / 28,0	1.575 / 40,0	0.472 / 12,0
TOG.G.0030.045.12	AUE1	1.181 / 30,0	1.772 / 45,0	0.472 / 12,0
TOG.G.0034.020.12	AT12	1.339 / 34,0	0.787 / 20,0	0.472 / 12,0
TOG.G.0034.044.12	AT14	1.339 / 34,0	1.732 / 44,0	0.472 / 12,0

Items included

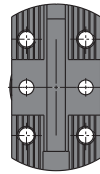
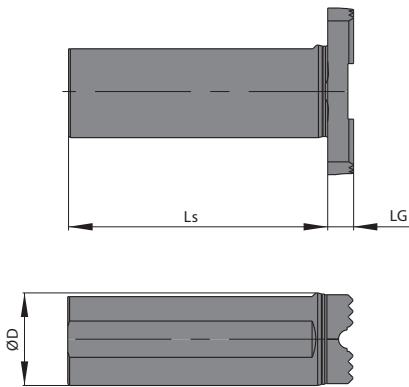
- Spindle
TOG.S.SPINDEL

Mounting screw machine-dependent



MANURHIN

Basic toolholder for
MANURHIN-Machines



○ Items included

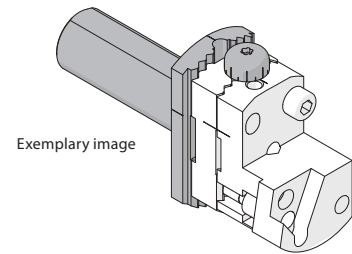


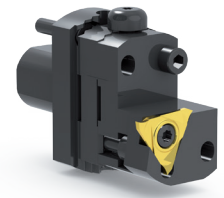
Image: TOG.G.0025.070.06

Part number	Webcode	ØD inch / mm	Ls inch / mm	LG inch / mm
TOG.G.0016.040.06	AT1Q	0.630 / 16,0	1.575 / 40,0	0.276 / 7,0
TOG.G.0020.150.06	AUE3	0.787 / 20,0	5.906 / 150,0	0.276 / 7,0
TOG.G.0025.070.06	AT1Y	0.984 / 25,0	2.756 / 70,0	0.276 / 7,0
TOG.G.0025.100.06	AUE4	0.984 / 25,0	3.937 / 100,0	0.276 / 7,0
TOG.G.0025.160.06	AUE5	0.984 / 25,0	6.299 / 160,0	0.276 / 7,0

Items included

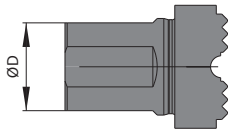
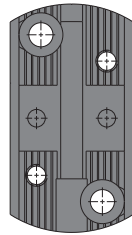
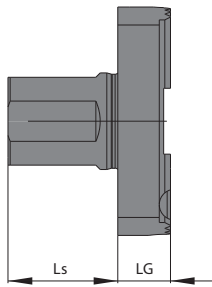
- Spindle
TOG.S.SPINDEL

Mounting screw machine-dependent



STAR

Basic toolholder for STAR-Machines



○ Items included

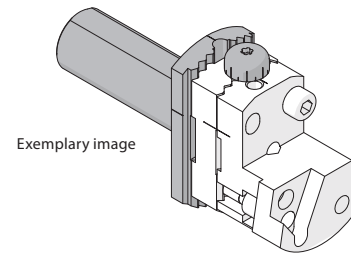


Image: TOG.G.0022.025.A12

Part number	Webcode	With through coolant	ØD	Ls	LG
			inch / mm	inch / mm	inch / mm
TOG.G.0016.010.10	AUES		0.630 / 16,0	0.394 / 10,0	0.394 / 10,0
TOG.G.0016.019.10	AUET		0.630 / 16,0	0.748 / 19,0	0.394 / 10,0
TOG.G.0016.021.06	AUEU		0.630 / 16,0	0.827 / 21,0	0.276 / 7,0
TOG.G.0022.023.06	AUEV		0.866 / 22,0	0.906 / 23,0	0.276 / 7,0
TOG.G.0022.030.06	AT1V		0.866 / 22,0	1.181 / 30,0	0.276 / 7,0
TOG.G.0022.070.06	AT1W		0.866 / 22,0	2.756 / 70,0	0.276 / 7,0
TOG.G.0022.025.A12	AT1T	SR16/20R	0.866 / 22,0	0.984 / 25,0	0.472 / 12,0
TOG.G.0022.025.B12	AT1U	SR32	0.866 / 22,0	0.984 / 25,0	0.472 / 12,0
TOG.G.0022.025.C12	AWKZ	SW20/SR-20RVI	0.827 / 21,0	0.984 / 25,0	0.472 / 12,0
TOG.G.0034.030.12	AT13		1.339 / 34,0	0.787 / 20,0	0.571 / 14,5

Items included

- Spindle
TOG.S.SPINDEL

Mounting screw machine-dependent



TORNOS

Basic toolholder for TORNOS-Machines

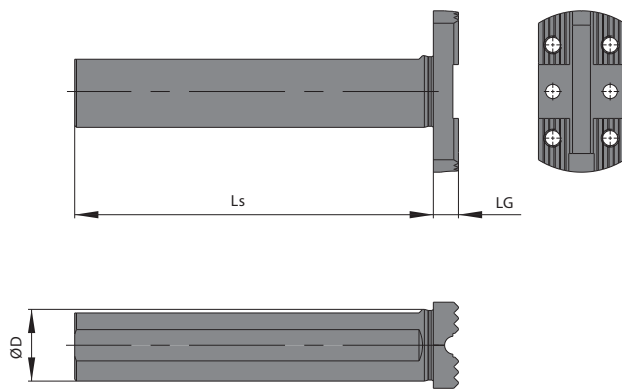
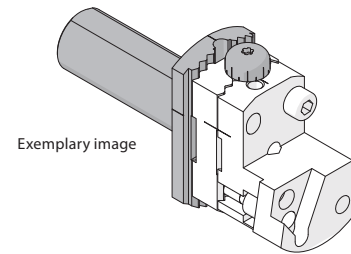


Image: TOG.G.0020.100.06

○ Items included

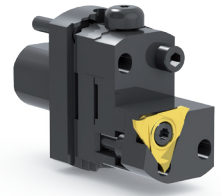


Part number	Webcode	ØD inch / mm	Ls inch / mm	LG inch / mm
TOG.G.0020.100.06	AT1S	0.787 / 20,0	3.937 / 100,0	0.276 / 7,0
TOG.G.0020.150.06	AUE3	0.787 / 20,0	5.906 / 150,0	0.276 / 7,0
TOG.G.0025.070.06	AT1Y	0.984 / 25,0	2.756 / 70,0	0.276 / 7,0
TOG.G.0025.100.06	AUE4	0.984 / 25,0	3.937 / 100,0	0.276 / 7,0
TOG.G.0025.160.06	AUE5	0.984 / 25,0	6.299 / 160,0	0.276 / 7,0

Items included

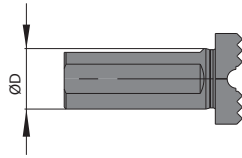
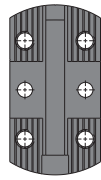
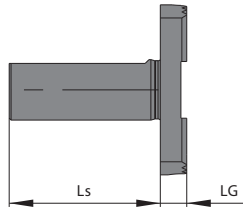
- Spindle
TOG.S.SPINDEL

Mounting screw machine-dependent



TRAUB

Basic toolholder for TRAUB-Machines



○ Items included

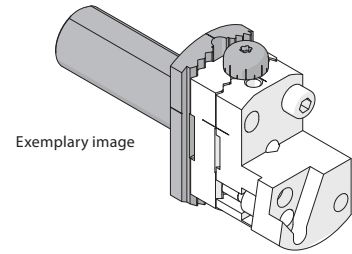


Image: TOG.G.0016.040.06

Part number	Webcode	ØD inch / mm	Ls inch / mm	LG inch / mm
TOG.G.0016.040.06	AT1Q	0.630 / 16,0	1.575 / 40,0	0.276 / 7,0
TOG.G.0028.080.12	AT1Z	1.102 / 28,0	3.150 / 80,0	0.472 / 12,0

Items included

- Spindle
TOG.S.SPINDEL

Mounting screw machine-dependent



VDI Basic toolholder for VDI-Machines

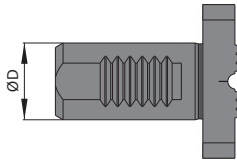
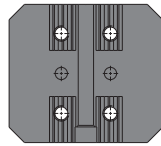
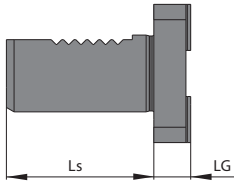
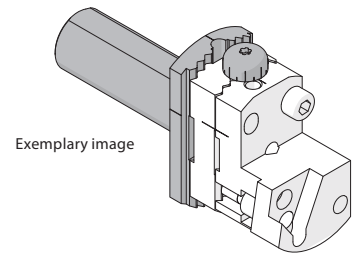


Image: TOG.G.VD20.040.45.24

○ Items included



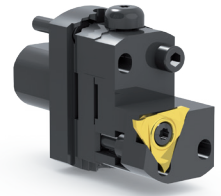
Exemplary image

Part number	Webcode	ØD inch / mm	Ls inch / mm	LG inch / mm
TOG.G.VD16.032.45.24	AUE6	0.630 / 16,0	1.260 / 32,0	0.394 / 10,0
TOG.G.VD20.040.45.24	AUE7	0.787 / 20,0	1.575 / 40,0	0.394 / 10,0
TOG.G.VD25.048.50.35	AUE8	0.984 / 25,0	1.890 / 48,0	0.472 / 12,0
TOG.G.VD30.055.53.45	AUE9	1.181 / 30,0	2.165 / 55,0	0.512 / 13,0

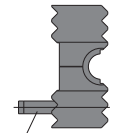
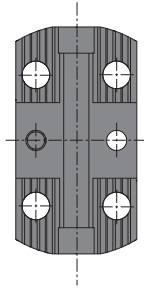
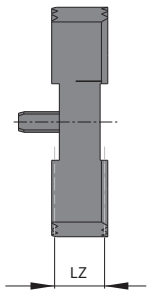
Items included

- Spindle
TOG.S.SPINDEL

Mounting screw machine-dependent



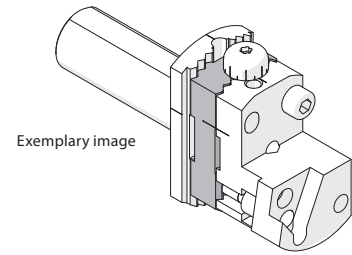
Spacer



Connector pin

Image: TOG.Z.0010.A

○ Items included

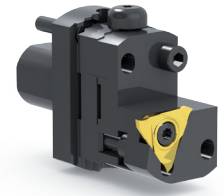


Exemplary image

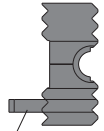
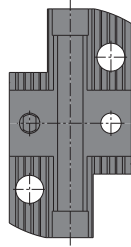
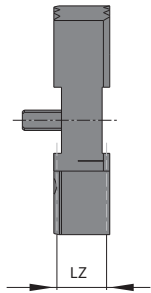
Part number	Webcode	LZ	
		inch / mm	
TOG.Z.0010.A	AT54	0.394 / 10,0	
TOG.Z.0015.A	AT56	0.591 / 15,0	
TOG.Z.0020.A	AT58	0.787 / 20,0	
TOG.Z.0025.A	AT6A	0.984 / 25,0	
TOG.Z.0030.A	AT6C	1.181 / 30,0	

Items included

- Connector pin
TOG.S.STIFT



Spacer



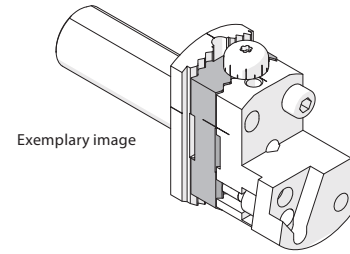
Connector pin

Image: TOG.Z.0010.B

For Basic Toolholder

- STAR: TOG.G.0022.025
TOG.G.0022.030.06
- HANWHA: TOG.G.0025.060.12
TOG.G.0032.025.12
TOG.G.0033.040.12
- MAIER: TOG.G.0028.040.12
- TRAUB: TOG.G.0028.080.12

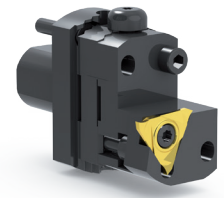
○ Items included



Part number	Webcode	LZ
		inch / mm
TOG.Z.0010.B	AT55	0.394 / 10,0
TOG.Z.0015.B	AT57	0.591 / 15,0
TOG.Z.0020.B	AT59	0.787 / 20,0
TOG.Z.0025.B	AT6B	0.984 / 25,0
TOG.Z.0030.B	AT6D	1.181 / 30,0

Items included

- Connector pin
TOG.S.STIFT



SIMTEK

Cassette for simturnA04, A05, A06 "ME"

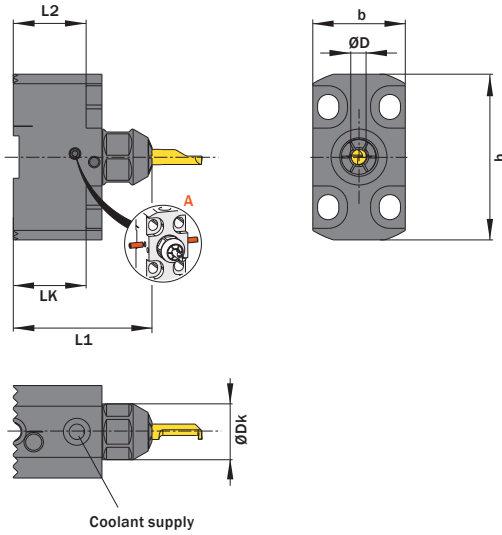


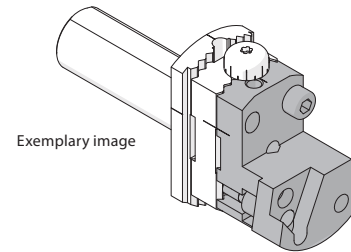
Image: TOG.K.A04.A1.MET



Discover the simturn AX toolholder „ME“.

Or visit <https://simtek.com/AXME/>

○ Items included



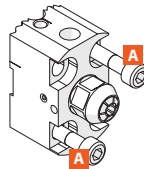
Basic toolholder

Spacer

Cassette

Part number	Webcode	With through coolant	b	h	L1	L2	LK	ØDk	ØD
			inch / mm	inch / mm	inch / mm	inch / mm	inch / mm	inch / mm	inch / mm
TOG.K.A04.A1.MET	AZMX	Yes	0.945 / 24,0	1.693 / 43,0	1.417 / 36,0	0.744 / 18,9	0.744 / 18,9	0.571 / 14,5	0.157 / 4,0
TOG.K.A05.A1.MET	AZMY	Yes	0.945 / 24,0	1.693 / 43,0	1.555 / 39,5	0.744 / 18,9	0.744 / 18,9	0.571 / 14,5	0.197 / 5,0
TOG.K.A06.A1.MET	AZMZ	Yes	0.945 / 24,0	1.693 / 43,0	1.555 / 39,5	0.744 / 18,9	0.744 / 18,9	0.650 / 16,5	0.236 / 6,0

Cassette mounting screw Please refer to page 32



A 1 Toolholder – 4 types of coolant supply



Illustration only



SIMTEK

Cassette for simturn E3

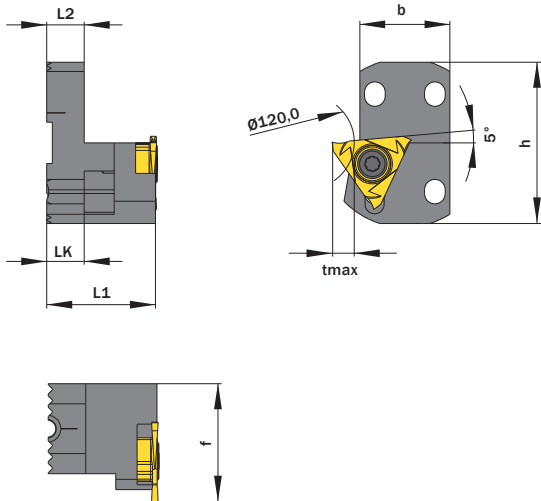
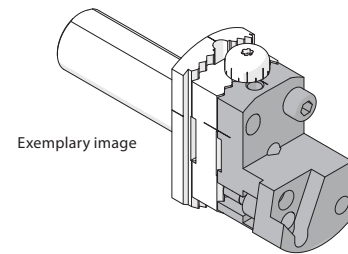


Image: TOG.K.TE3.A1 R

○ Items included

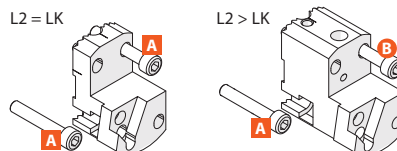


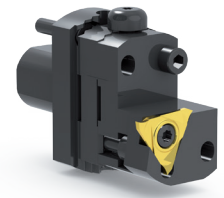
Part number	Webcode	With through coolant	b	h	f	L1	L2	LK	tmax
			inch / mm	inch / mm	inch / mm	inch / mm	inch / mm	inch / mm	inch / mm
TOG.K.TE3.A1 R / L	R: AT4D L: AT4C	No	0.945 / 24,0	1.693 / 43,0	1.236 / 31,4	1.142 / 29,0	0.394 / 10,0	0.394 / 10,0	0.177 / 4,5
TOG.K.TE3.B1 R / L	R: AT4H L: AT4G	Yes	0.945 / 24,0	1.693 / 43,0	1.236 / 31,4	1.811 / 46,0	1.063 / 27,0	0.394 / 10,0	0.177 / 4,5

Items included

- Insert screw
TOG.S.E3

Cassette mounting screw **Please refer to page 32**





SIMTEK

Cassette for
simturn E12

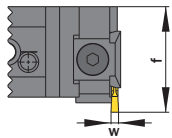
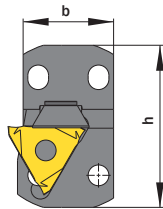
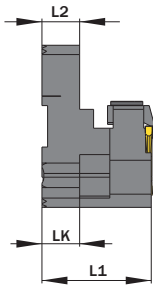
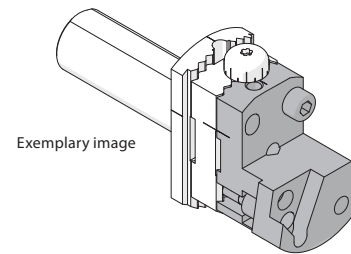


Image: TOG.K.E12.A1.01 R

○ Items included



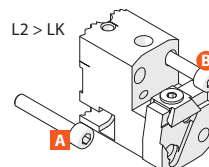
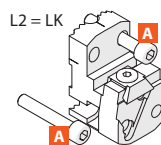
Exemplary image

Part number	Webcode	With through coolant	b	h	f	w	L1	L2	LK
			inch / mm	inch / mm	inch / mm	inch / mm	inch / mm	inch / mm	inch / mm
TOG.K.E12.A1.01 R / L	R: AT3D L: AT3C	No	0.945 / 24,0	1.693 / 43,0	1.102 / 28,0	0.059 / 1,5	1.142 / 29,0	0.394 / 10,0	0.394 / 10,0
TOG.K.E12.A1.02 R / L	R: AT3F L: AT3E	No	0.945 / 24,0	1.693 / 43,0	1.102 / 28,0	0.098 / 2,5	1.142 / 29,0	0.394 / 10,0	0.394 / 10,0
TOG.K.E12.B1.01 R / L	R: AT3N L: AT3M	Yes	0.945 / 24,0	1.693 / 43,0	1.102 / 28,0	0.059 / 1,5	1.732 / 44,0	1.063 / 27,0	0.394 / 10,0
TOG.K.E12.B1.02 R / L	R: AT3Q L: AT3P	Yes	0.945 / 24,0	1.693 / 43,0	1.102 / 28,0	0.098 / 2,5	1.732 / 44,0	1.063 / 27,0	0.394 / 10,0

Items included

- Insert screw
TOG.S.E12
- Clamp
E20.1-4

Cassette mounting screw Please refer to page 32





SIMTEK

Cassette for
simturn E12

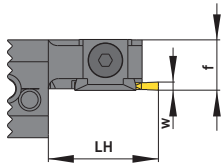
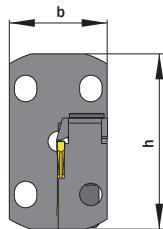
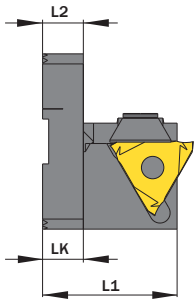
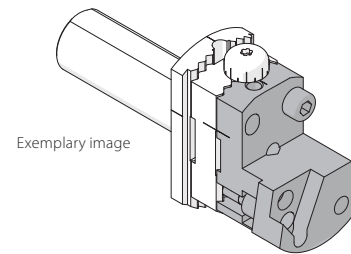


Image: TOG.K.E12.C1.01 R

○ Items included



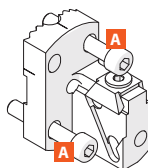
Exemplary image

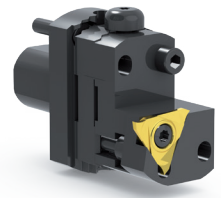
Part number	Webcode	With through coolant	b	h	f	w	L1	L2	LK	LH
			inch / mm	inch / mm	inch / mm	inch / mm	inch / mm	inch / mm	inch / mm	inch / mm
TOG.K.E12.C1.01 R	AT3W	No	0.945 / 24,0	1.693 / 43,0	0.486 / 12,35	0.059 / 1,5	1.299 / 33,0	0.394 / 10,0	0.394 / 10,0	1.063 / 27,0
TOG.K.E12.C1.02 R	AT3X	No	0.945 / 24,0	1.693 / 43,0	0.486 / 12,35	0.098 / 2,5	1.299 / 33,0	0.394 / 10,0	0.394 / 10,0	1.063 / 27,0

Items included

- Insert screw
TOG.S.E12
- Clamp
E20.1-3

Cassette mounting screw Please refer to page 32





SIMTEK

Cassette for
simturn FX

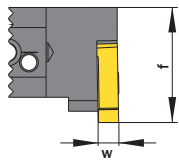
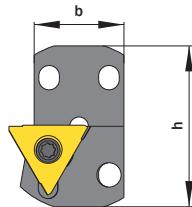
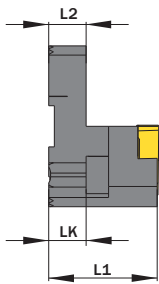
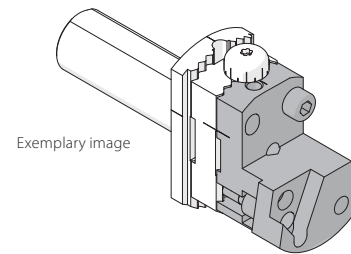


Image: TOG.K.TF3.01.A1 R

○ Items included



Exemplary image

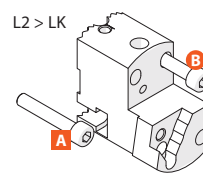
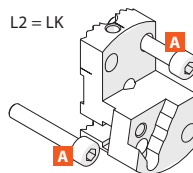
Part number	Webcode	With through coolant	b	h	f	w	L1	L2	LK
			inch / mm	inch / mm	inch / mm	inch / mm	inch / mm	inch / mm	inch / mm
TOG.K.TF3.01.A1 R / L	R: AZHN / L: AZHM	No	0.945 / 24,0	1.693 / 43,0	1.211 / 30,75	0.217 / 5,5	1.142 / 29,0	0.394 / 10,0	0.394 / 10,0
TOG.K.TF3.01.B1 R / L	R: AZHS / L: AZHQ	Yes	0.945 / 24,0	1.693 / 43,0	1.211 / 30,75	0.217 / 5,5	1.811 / 46,0	1.063 / 27,0	0.394 / 10,0

Items included

- Insert screw

TOG.S.FX

Cassette mounting screw Please refer to page 32





ISO Cassette for
...CC09T3...

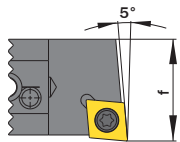
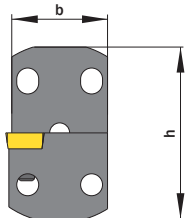
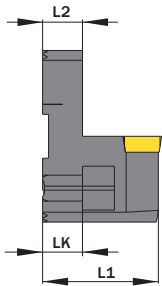
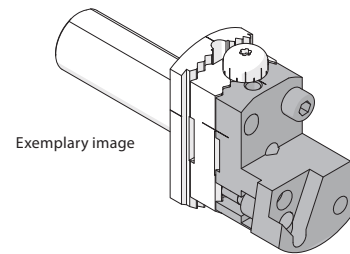


Image: TOG.K.CC9T3.A1 R

○ Items included



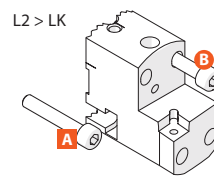
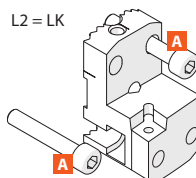
Part number	Webcode	With through coolant	b		h		L1		L2		LK	
			inch / mm	inch / mm	inch / mm	inch / mm	inch / mm	inch / mm	inch / mm	inch / mm		
TOG.K.CC09T3.A1 R / L	R: AT2Q / L: AT2P	No	0.945 / 24,0	1.693 / 43,0	1.004 / 25,5	1.142 / 29,0	0.394 / 10,0	0.394 / 10,0				
TOG.K.CC09T3.B1 R / L	R: AUP9 / L: AUP8	Yes	0.945 / 24,0	1.693 / 43,0	1.004 / 25,5	1.811 / 46,0	27,0	0.394 / 10,0				

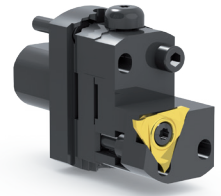
Items included

- Insert screw

TOG.S.CC09T3

Cassette mounting screw Please refer to page 32





ISO

Cassette for
...DC0702...

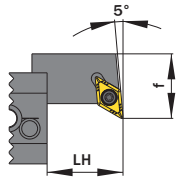
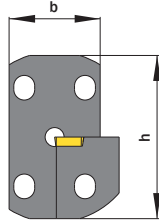
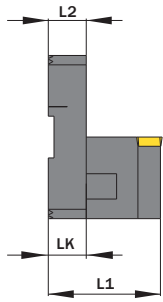
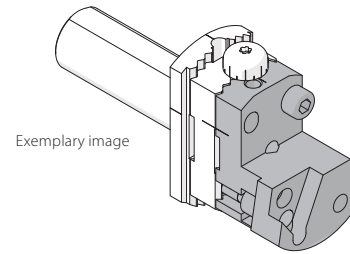


Image: TOG.K.DC0702.A1 R

○ Items included



Exemplary image

Basic toolholder

Spacer

Cassette

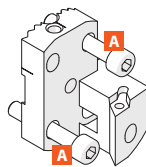
Part number	Webcode	With through coolant	b	h	f	L1	L2	LK	LH
			inch / mm	inch / mm	inch / mm	inch / mm	inch / mm	inch / mm	inch / mm
TOG.K.DC0702.A1 R / L	R: AT2V L: AT2U	No	1.142 / 29,0	1.693 / 43,0	0.669 / 17,0	1.163 / 29,55	0.394 / 10,0	0.394 / 10,0	0.787 / 20,0

Items included

- Insert screw

TOG.S.DC0702

Cassette mounting screw Please refer to page 32





ISO Cassette for
...DC11T3...

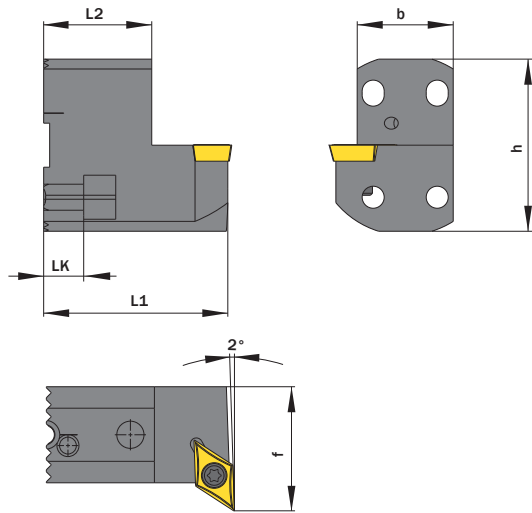
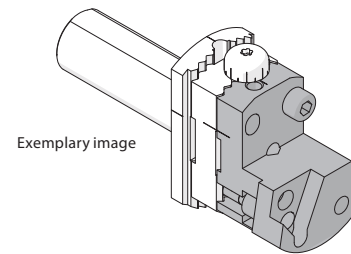


Image: TOG.K.DC11T3.B1 R

○ Items included

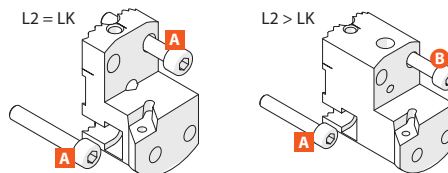


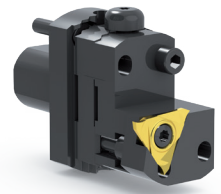
Part number	Webcode	With through coolant	b	h	f	L1	L2	LK
			inch / mm	inch / mm	inch / mm	inch / mm	inch / mm	inch / mm
TOG.K.DC11T3.A1 R / L	R: AT2Z L: AT2Y	No	0.945 / 24,0	1.693 / 43,0	1.220 / 31,0	1.142 / 29,0	0.394 / 10,0	0.394 / 10,0
TOG.K.DC11T3.B1 R / L	R: AT23 L: AT22	Yes	0.945 / 24,0	1.693 / 43,0	1.220 / 31,0	1.811 / 46,0	1.063 / 27,0	0.394 / 10,0

Items included

- Insert screw
TOG.S.DC11T3

Cassette mounting screw Please refer to page 32





ISO

Cassette for
...DC11T3...

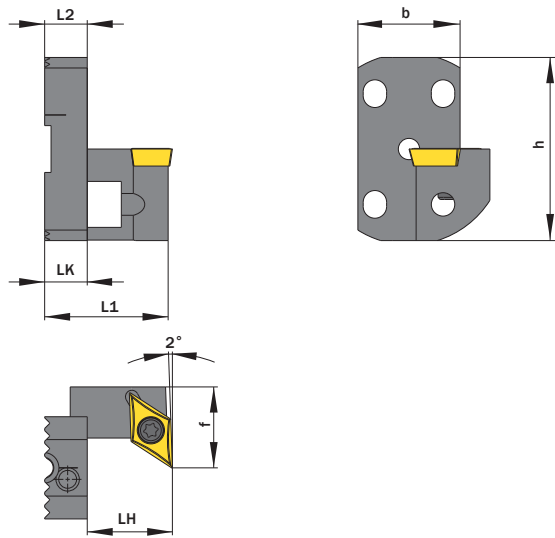
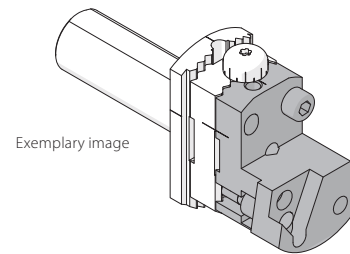


Image: TOG.K.DC11T3.C1 R

○ Items included



Exemplary image

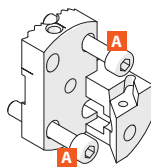
Part number	Webcode	With through coolant	b	h	f	L1	L2	LK	LH
			inch / mm	inch / mm	inch / mm	inch / mm	inch / mm	inch / mm	inch / mm
TOG.K.DC11T3.C1 R / L	R: AT27 L: AT26	No	1.220 / 31,0	1.693 / 43,0	0.748 / 19,0	1.142 / 29,0	0.394 / 10,0	0.394 / 10,0	0.787 / 20,0

Items included :

- Insert screw

TOG.S.DC11T3

Cassette mounting screw Please refer to page 32





ISO Cassette for ...DC11T3...

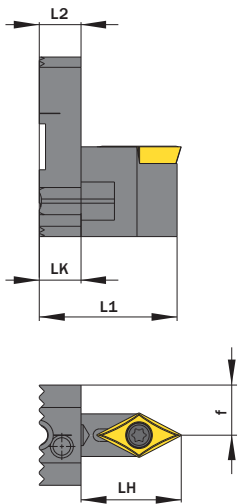
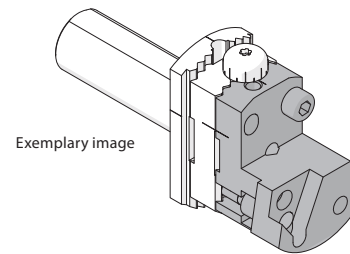


Image: TOG.K.DC11T3.D1

○ Items included



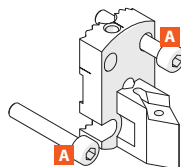
Part number	Webcode	With through coolant	b	h	f	L1	L2	LK	LH
			inch / mm	inch / mm	inch / mm	inch / mm	inch / mm	inch / mm	inch / mm
TOG.K.DC11T3.D1	AT3A	No	0.945 / 24,0	1.693 / 43,0	0.472 / 12,0	1.299 / 33,0	0.394 / 10,0	0.394 / 10,0	0.945 / 24,0

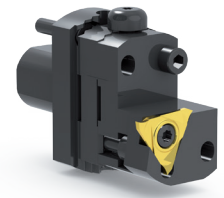
Items included:

- Insert screw

TOG.S.DC11T3

Cassette mounting screw Please refer to page 32





ISO

Cassette for
...VC1103...

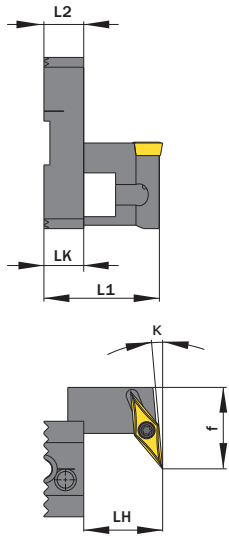
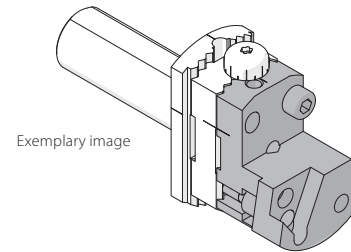


Image: TOG.KVC1103.A1 R

○ Items included



Exemplary image

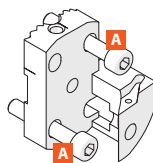
Part number	Webcode	With through coolant	b	h	f	K	L1	L2	LK	LH
			inch / mm	inch / mm	inch / mm		inch / mm	inch / mm	inch / mm	inch / mm
TOG.KVC1103.A1 R / L	R: AT5X L: AT5W	No	1.280 / 32,5	1.693 / 43,0	0.807 / 20,5	5°	1.142 / 29,0	0.394 / 10,0	0.394 / 10,0	0.787 / 20,0
TOG.KVC1103.B1 R / L	R: AUJM L: AUJK	No	1.280 / 32,5	1.693 / 43,0	0.807 / 20,5	20°	1.142 / 29,0	0.394 / 10,0	0.394 / 10,0	0.787 / 20,0
TOG.KVC1103.C1 R / L	R: AUQB L: AUQA	No	0.945 / 24,0	1.693 / 43,0	1.287 / 32,7	5°	1.142 / 29,0	0.394 / 10,0	0.394 / 10,0	0.787 / 20,0

Items included:

- Insert screw

TOG.S.VC1103

Cassette mounting screw Please refer to page 32





ISO
Cassette for
3ER / R16,3EL / L16

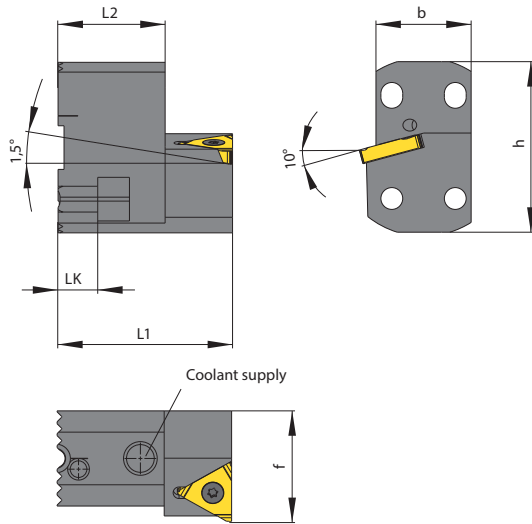
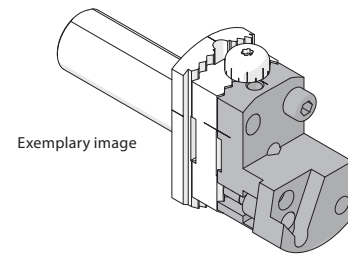


Image: TOG.K.R16.B1 R

○ Items included



Basic toolholder

Spacer

Cassette

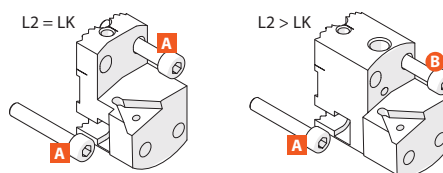
Part number	Webcode	With through coolant	b	h	f	L1	L2	LK
			inch / mm	inch / mm	inch / mm	inch / mm	inch / mm	inch / mm
TOG.K.R16.A1 R	AT35	No	0.945 / 24,0	1.693 / 43,0	1.109 / 28,16	1.142 / 29,0	0.394 / 10,0	0.394 / 10,0
TOG.K.L16.A1 L	AT30	No	0.945 / 24,0	1.693 / 43,0	1.109 / 28,16	1.142 / 29,0	0.394 / 10,0	0.394 / 10,0
TOG.K.R16.B1 R	AT39	Yes	0.945 / 24,0	1.693 / 43,0	1.109 / 28,16	1.732 / 44,0	0.787 / 20,0	0.394 / 10,0
TOG.K.L16.B1 L	AT32	Yes	0.945 / 24,0	1.693 / 43,0	1.109 / 28,16	1.732 / 44,0	0.787 / 20,0	0.394 / 10,0

Items included:

- Insert screw

TOG.S.3ER

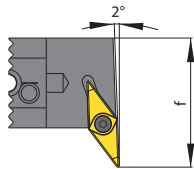
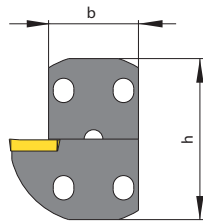
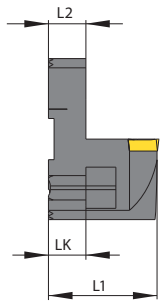
Cassette mounting screw Please refer to page 32





ISO

Cassette for
...VC1303...



○ Items included

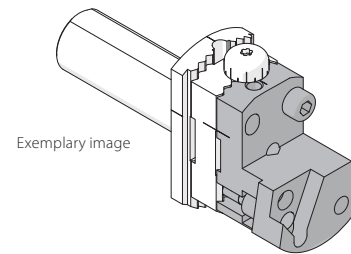


Image: TOG.K.VC1303.A1 R

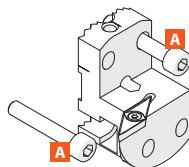
Part number	Webcode	With through coolant	b	h	f	L1	L2	LK
			inch / mm	inch / mm	inch / mm	inch / mm	inch / mm	inch / mm
TOG.K.VC1303.A1 R / L	R: AT51 L: AT50	No	0.945 / 24,0	1.693 / 43,0	1.358 / 34,5	1.142 / 29,0	0.394 / 10,0	0.394 / 10,0

Items included:

- Insert screw

TOG.S.VC1303

Cassette mounting screw Please refer to page 32





Cassette for Round Shank

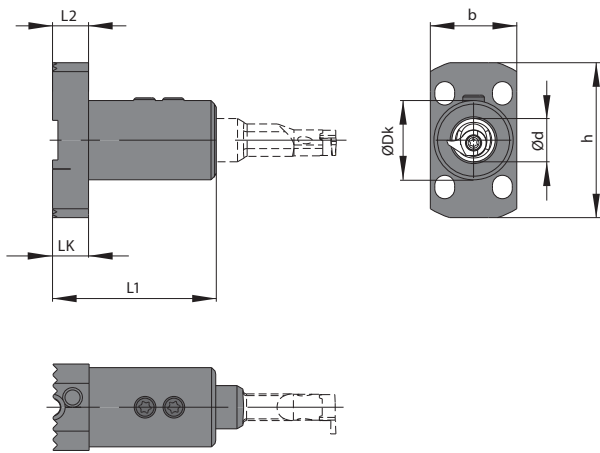
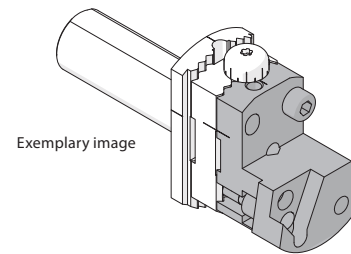


Image: TOG.K.0012.A1

○ Items included



Exemplary image

Part number	Webcode	b	h	L1	L2	LK	ØDk	Ød
		inch / mm	inch / mm	inch / mm	inch / mm	inch / mm	inch / mm	inch / mm
TOG.K.0006.A1*	AT18	0.945 / 24,0	1.693 / 43,0	1.772 / 45,0	0.394 / 10,0	0.394 / 10,0	0.787 / 20,0	0.236 / 6,0
TOG.K.0008.A1**	AT2A	0.945 / 24,0	1.693 / 43,0	1.772 / 45,0	0.394 / 10,0	0.394 / 10,0	0.787 / 20,0	0.315 / 8,0
TOG.K.0010.A1**	AT2C	0.945 / 24,0	1.693 / 43,0	1.772 / 45,0	0.394 / 10,0	0.394 / 10,0	0.787 / 20,0	0.394 / 10,0
TOG.K.0012.A1**	AT2E	0.945 / 24,0	1.693 / 43,0	1.772 / 45,0	0.394 / 10,0	0.394 / 10,0	0.787 / 20,0	0.472 / 12,0

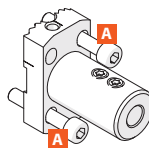
Items included:

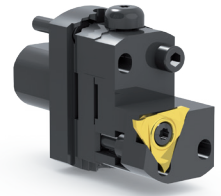
- Insert screw

*TOG.S.M6.07

**TOG.S.M6.05

Cassette mounting screw **Please refer to page 32**





Cassette for square shank 10,0 x 10,0 mm

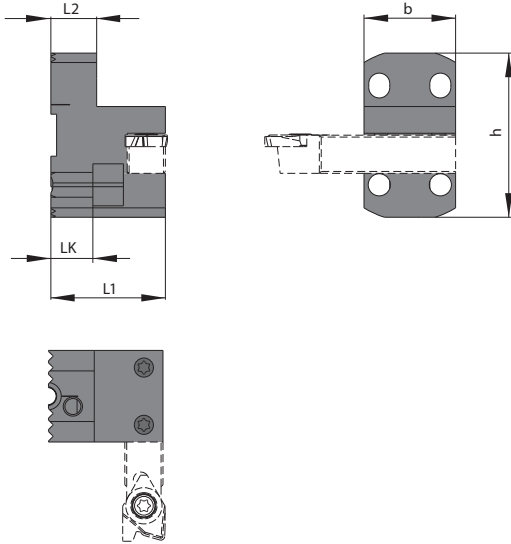
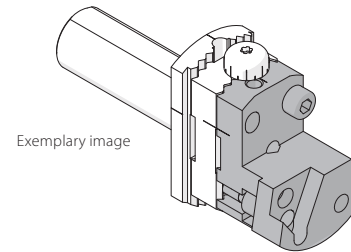


Image: TOG.K.1010.A1

○ Items included



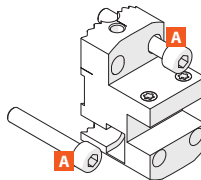
Exemplary image

Part number	Webcode	With through coolant	b	h	L1	L2	LK
			inch / mm	inch / mm	inch / mm	inch / mm	inch / mm
TOG.K.1010.A1	AT2G	No	0.945 / 24,0	1.693 / 43,0	1.181 / 30,0	0.394 / 10,0	0.394 / 10,0

Items included:

- Insert screw
TOG.S.M6.07

Cassette mounting screw Please refer to page 32





Cassette for Collet Chucks

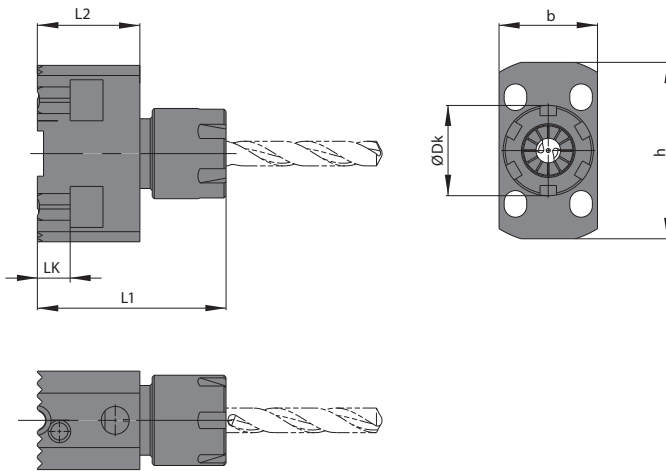
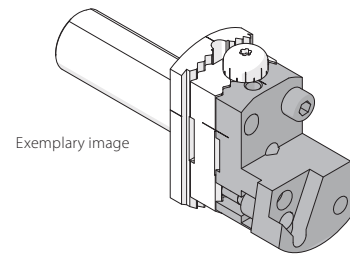


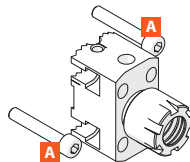
Image: TOG.K.ER16.B1

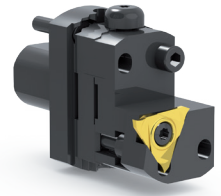
○ Items included



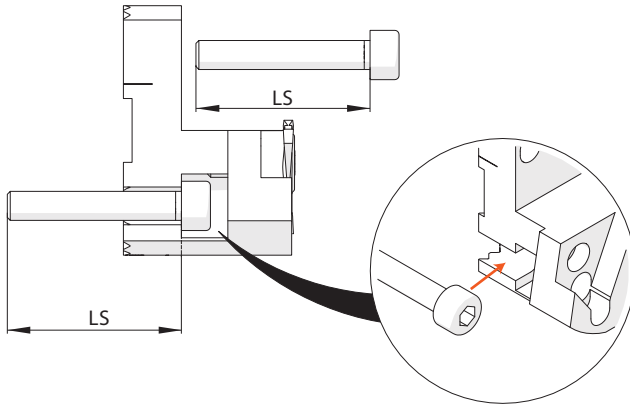
Part number	Webcode	With through coolant	b	h	L1	L2	LK	ØDk
			inch / mm	inch / mm	inch / mm	inch / mm	inch / mm	inch / mm
TOG.K.ER16.B1	AT38	Yes	0.945 / 24,0	1.693 / 43,0	1.811 / 46,0	0.984 / 25,0	0.315 / 8,0	0.866 / 22,0
TOG.K.ER20.B1	AUGZ	Yes	0.945 / 24,0	1.693 / 43,0	1.969 / 50,0	1.102 / 28,0	0.315 / 8,0	1.102 / 28,0

Cassette mounting screw Please refer to page 32





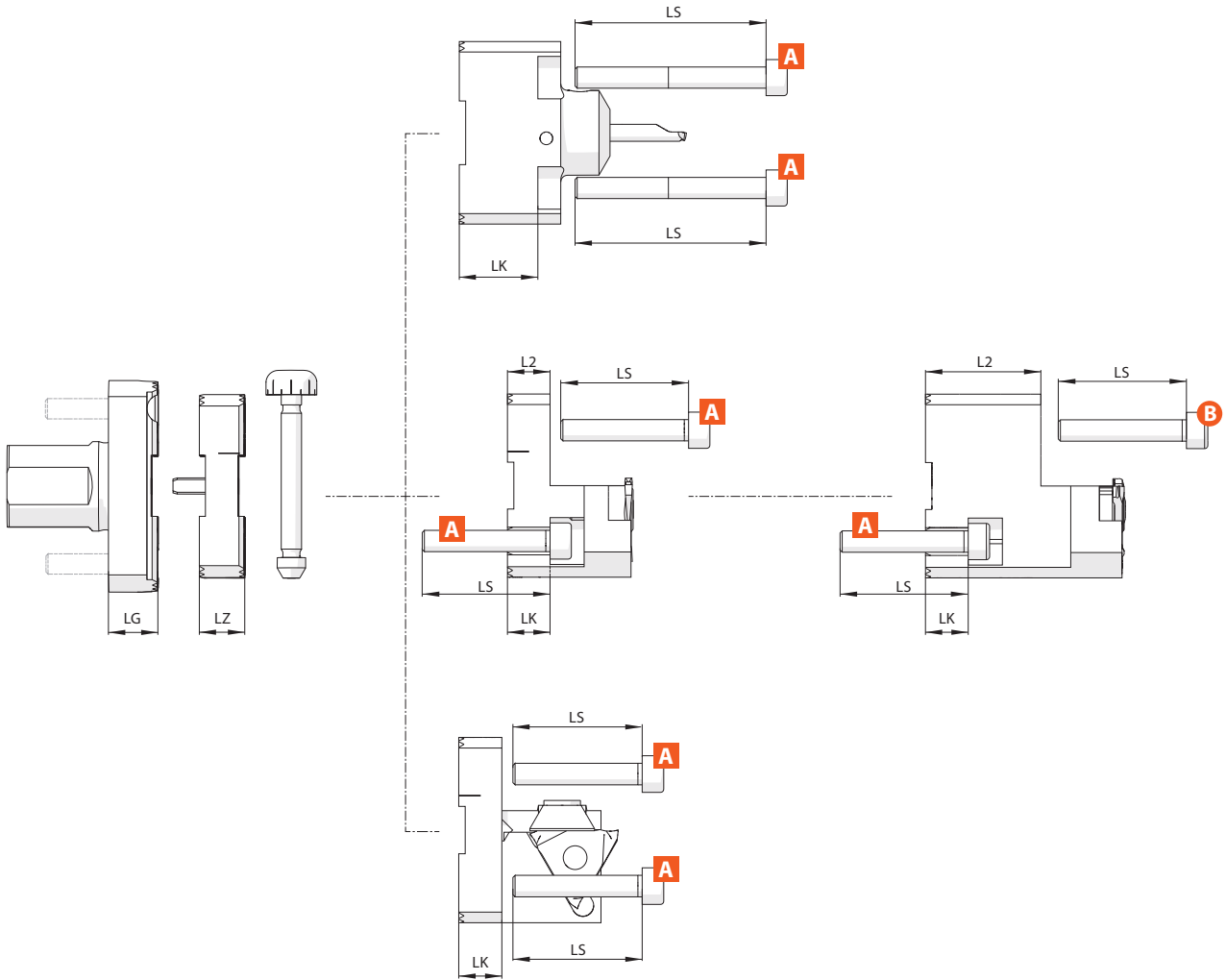
Screw for
Cassette mounting



Part number	Webcode	Screw length (LS)
TOG.S.M5.15	AUQF	M5 x 15
TOG.S.M5.20	AUQG	M5 x 20
TOG.S.M5.25	AUQH	M5 x 25
TOG.S.M5.30	AUQJ	M5 x 30
TOG.S.M5.35	AUQK	M5 x 35
TOG.S.M5.40	AUQM	M5 x 40
TOG.S.M5.45	AUQN	M5 x 45
TOG.S.M5.50	AUQP	M5 x 50
TOG.S.M5.55	AZDX	M5 x 55
TOG.S.M5.60	AZDY	M5 x 60



! Important note about the screw length



Calculation of the screw length (LS)

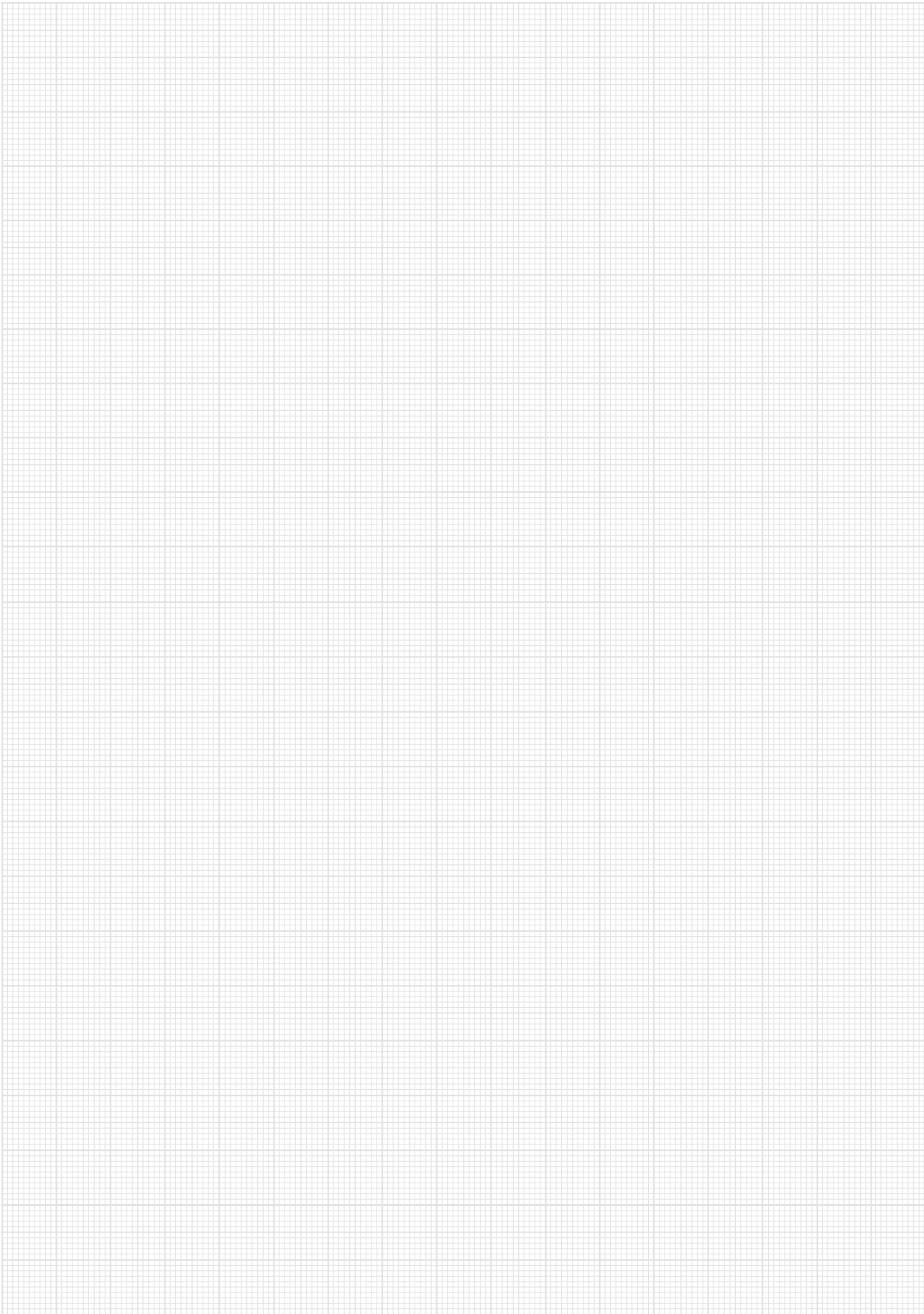


A $LS = LG + LZ + LK - 2 \text{ mm}$

B $LS = LG + LZ + L2 - 2 \text{ mm}$

Screw part number
Please refer to page 32

A suitable screw is included in case of buying basic toolholder and cassette or basic toolholder with spacer and cassette. Please order separate screws in all other cases. Above formula helps you to calculate the needed screw length.



Contact

SIMTEK USA Inc.
13 Fairfield Ave. Suite 104
US 07424-1257 Little Falls, NJ

fon +1 862 757 8130
fax +1 862 757 8134
mail usa@simtek.com
web www.simtek.com

© 2019 SIMTEK Group. All rights reserved. Errors, omissions and changes excepted. Reprint of this catalog, complete or in extracts, only with our prior written permission. precium is a product of the SIMTEK Group and exclusively distributed through the global SIMTEK Distribution Network. SIMTEK, simturn, simmill, and simcut are registered trademarks in the US and several other countries. „QR Code“ is a registered trademark of DENSO WAVE INCORPORATED. This document has been prepared in English. In the event a translation exists and there is a discrepancy, this English original shall prevail.



www.precium.de